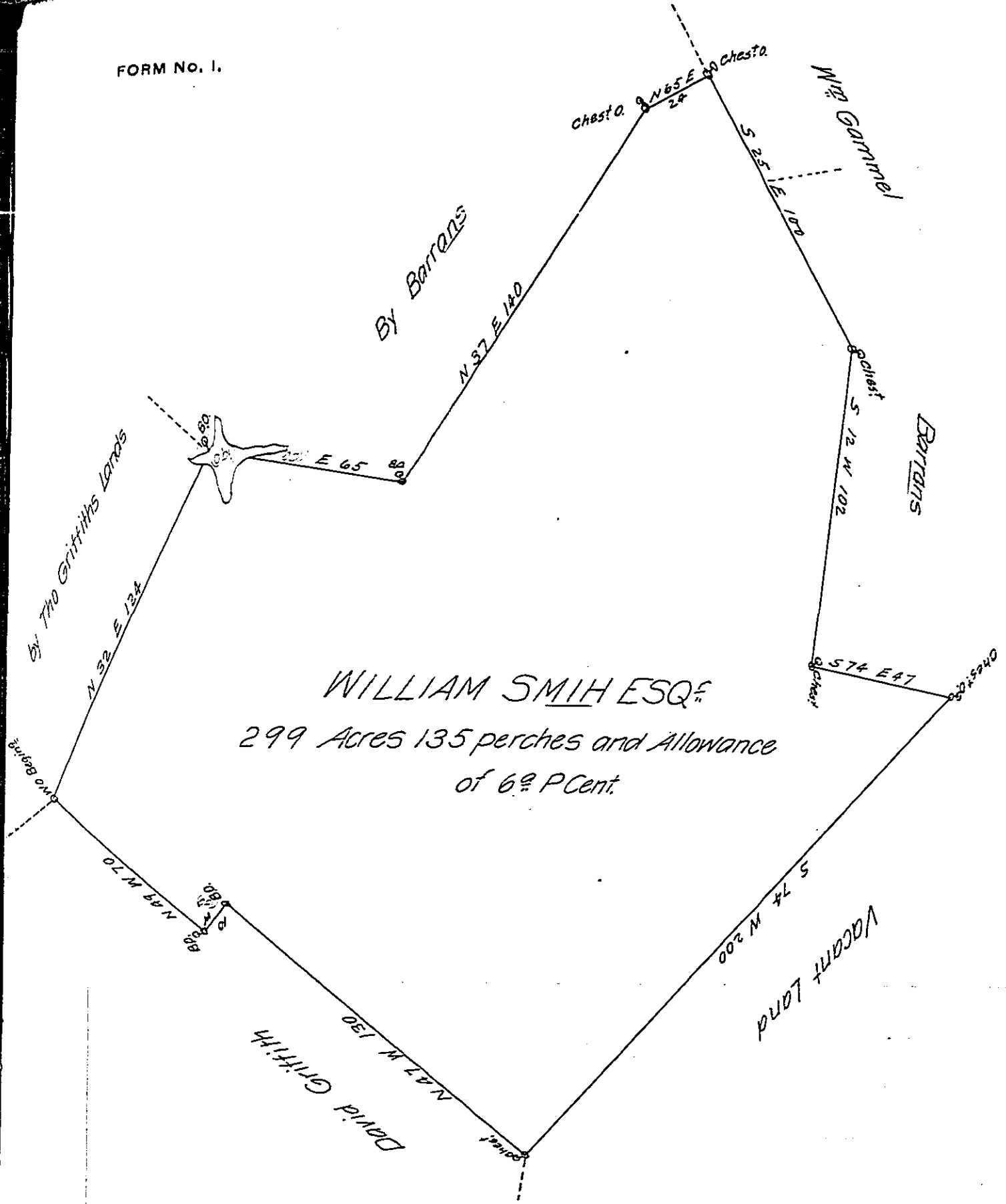


FORM NO. 1.



A Draught of a Tract of Land Situate in Shrewsbury Township York County Surveyed to William Smith Esq in pursuance of Two Warrants from the Honourable Proprietors for 100 acres each The first bearing date 31st day of March 1763. The other bearing date the thirty first day of May 1763. Surveyed the 27th day of the Second Month 1765

To John Lukens Surveyor Gen!

P^c W^m Matthews D.S.

IN TESTIMONY that the above is a copy of the original remaining on file in the Department of Internal Affairs of Pennsylvania, made conformably to an Act of Assembly approved the 16th day of February, 1833, I have hereunto set my Hand and caused the Seal of said Department to be affixed at Harrisburg, this second day of October 1906

Go a c D Penning
 Secretary of Internal Affairs.